

**FOR
LEASE**

2317 BALLTOWN ROAD

NISKAYUNA, NY 12309



- **1,169SF SECOND FLOOR PROFESSIONAL STUDIO SUITE**
- CONVENIENTLY LOCATED, CORNER OF BALLTOWN RD & RIVER RD
- MINUTES FROM I-87 NORTHWAY AND ROUTE 7
- AMPLE SURFACE PRIVATE PARKING
- RECENTLY RENOVATED COMMON AREAS AND RESTROOMS
- GENEROUS FIT-UP ALLOWANCE INCLUDED IN BASE RENT

AVAILABLE FOR LEASE

\$20.00 PSF

\$1,948 Month

PLUS UTILITIES AND JANITORIAL

FOR MORE
INFORMATION
PLEASE
CONTACT

THOMAS A. MILLER

NYS Licensed Associate Real Estate Broker
(518) 462-7491 x 210 office
(518) 495-1000 mobile
Tommy@CarrowRealEstate.com



Adding Value Through Professional Real Estate Services

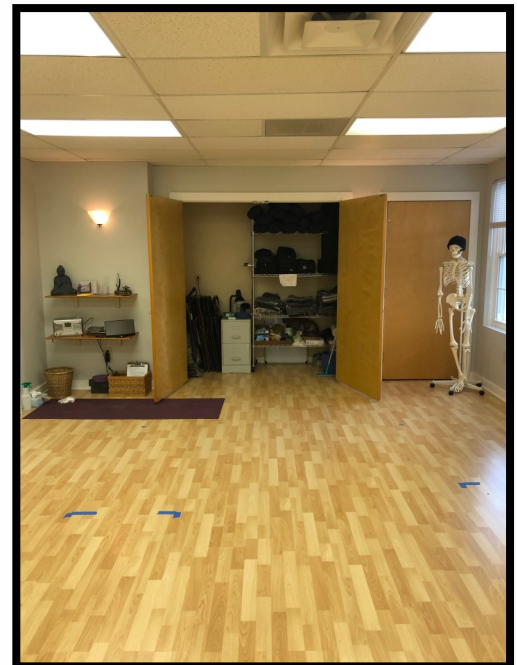
the information herein has not been verified, and is provided without warranty unless otherwise guaranteed in writing.
readers are advised to investigate and verify same prior to entering into a transaction.

**FOR
LEASE**

2317 BALLTOWN ROAD

NISKAYUNA, NY 12309

PHOTOS



FOR MORE
INFORMATION
PLEASE
CONTACT

THOMAS A. MILLER
NYS Licensed Associate Real Estate Broker
(518) 462-7491 x 210 office
(518) 495-1000 mobile
Tommy@CarrowRealEstate.com



Adding Value Through Professional Real Estate Services

the information herein has not been verified, and is provided without warranty unless otherwise guaranteed in writing.
readers are advised to investigate and verify same prior to entering into a transaction.

**FOR
LEASE**

2317 BALLTOWN ROAD

NISKAYUNA, NY 12309

PARKING
LOT



FOR MORE
INFORMATION
PLEASE
CONTACT

THOMAS A. MILLER
NYS Licensed Associate Real Estate Broker
(518) 462-7491 x 210 office
(518) 495-1000 mobile
Tommy@CarrowRealEstate.com



Adding Value Through Professional Real Estate Services

the information herein has not been verified, and is provided without warranty unless otherwise guaranteed in writing.
readers are advised to investigate and verify same prior to entering into a transaction.

**FOR
LEASE**

2317 BALLTOWN ROAD

NISKAYUNA, NY 12309

DEMOGRAPHICS

Population	1 Mile	3 Mile	5 Mile
2018 Total Population:	8,165	60,501	141,406
2023 Population:	8,214	60,267	141,159
Pop Growth 2018-2023:	0.60%	(0.39%)	(0.17%)
Average Age:	40.40	37.90	39.50
Households			
2018 Total Households:	3,610	24,021	57,056
HH Growth 2018-2023:	0.78%	(0.33%)	(0.16%)
Median Household Inc:	\$79,837	\$54,390	\$59,756
Avg Household Size:	2.20	2.40	2.40
2018 Avg HH Vehicles:	2.00	1.00	2.00
Housing			
Median Home Value:	\$217,231	\$178,794	\$173,494
Median Year Built:	1957	1948	1950

LOCATION



FOR MORE
INFORMATION
PLEASE
CONTACT

THOMAS A. MILLER
NYS Licensed Associate Real Estate Broker
(518) 462-7491 x 210 office
(518) 495-1000 mobile
Tommy@CarrowRealEstate.com



Adding Value Through Professional Real Estate Services

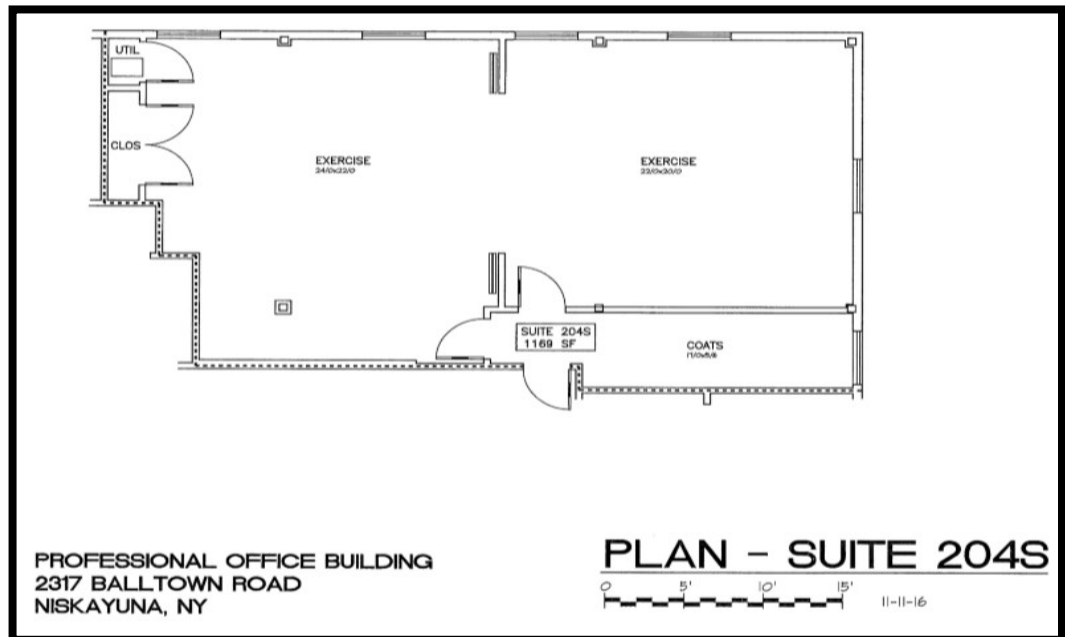
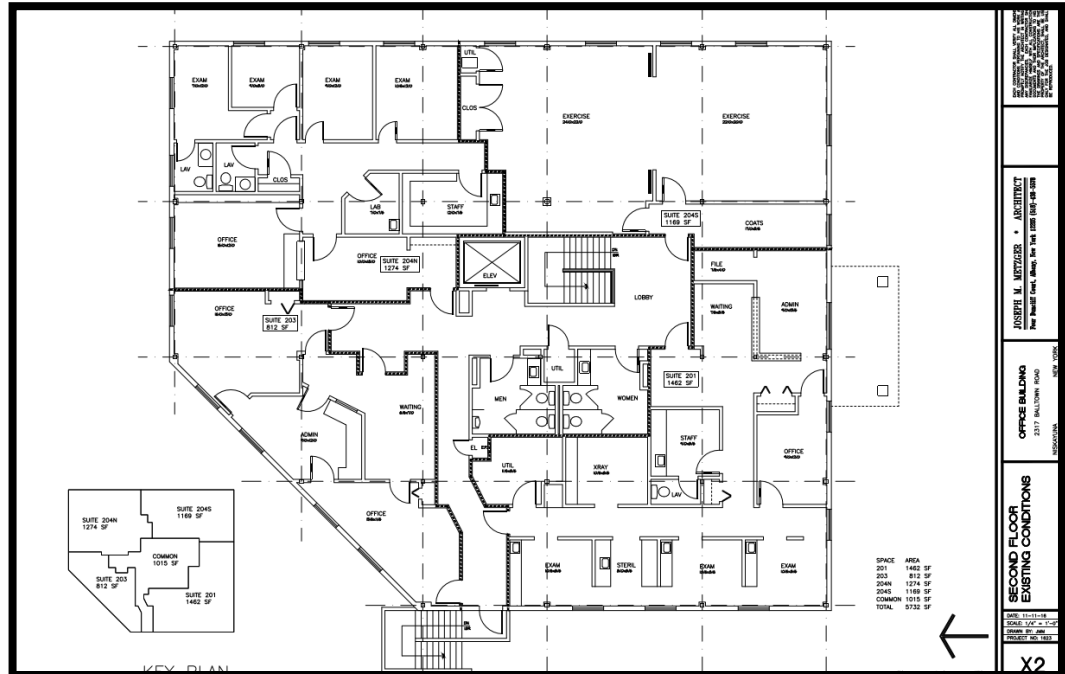
the information herein has not been verified, and is provided without warranty unless otherwise guaranteed in writing. readers are advised to investigate and verify same prior to entering into a transaction.

**FOR
LEASE**

2317 BALLTOWN ROAD

NISKAYUNA, NY 12309

FLOOR PLANS



FOR MORE
INFORMATION
PLEASE
CONTACT

THOMAS A. MILLER
 NYS Licensed Associate Real Estate Broker
 (518) 462-7491 x 210 office
 (518) 495-1000 mobile
 Tommy@CarrowRealEstate.com



Adding Value Through Professional Real Estate Services

the information herein has not been verified, and is provided without warranty unless otherwise guaranteed in writing. readers are advised to investigate and verify same prior to entering into a transaction.