

**FOR
LEASE**

LOUDON PLAZA

350 NORTHERN BLVD
ALBANY, NY

CLASS A PROFESSIONAL OFFICE



SPACE AVAILABLE RANGING FROM 1,200 SF TO 3,800 SF

CONVENIENTLY LOCATED

DIRECTLY ACROSS THE STREET FROM SAMARITAN HOSPITAL

NUMEROUS ON-SITE RETAIL AMENITIES

EASY ACCESS TO I-90

AMPLE ON-SITE PARKING (8.5:1)

NEWLY RENOVATED COMMON AREAS

IDEAL FOR BOTH PROFESSIONAL OFFICE AND MEDICAL USERS

PROFESSIONAL PROPERTY MANAGEMENT

LANDLORD WILL BUILD TO SUIT

FOR MORE
INFORMATION
PLEASE
CONTACT

RUDY R. LYNCH, CCIM

NYS Licensed Associate Real Estate Broker
(518) 337-3705 mobile
Rudy@CarrowRealEstate.com

KYLE BRADLEY, CPA

NYS Licensed Real Estate Salesperson
(845) 325-1568 mobile
kbradley@CarrowRealEstate.com

AVAILABLE FOR LEASE

\$16.50 PSF

**MODIFIED GROSS PLUS UTILITIES
DAILY JANITORIAL INCLUDED**



Adding Value Through Professional Real Estate Services

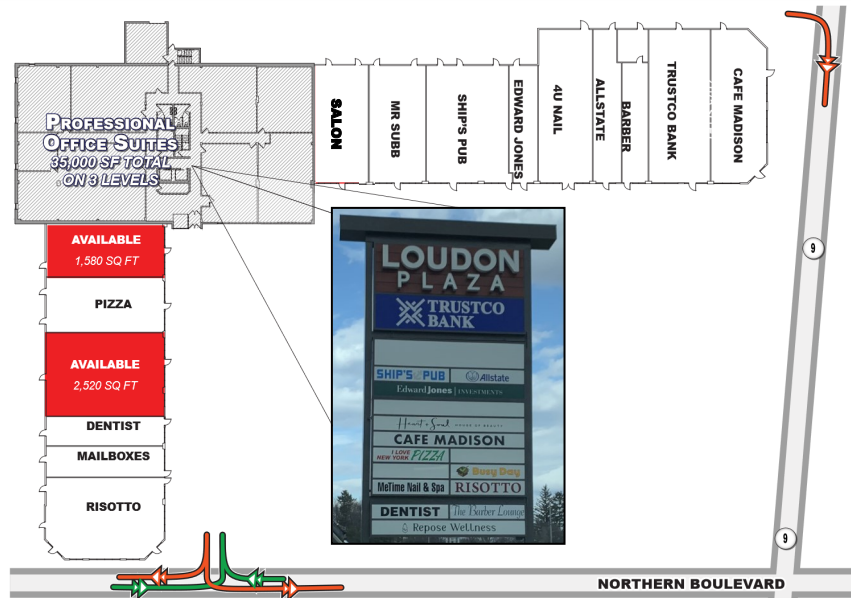
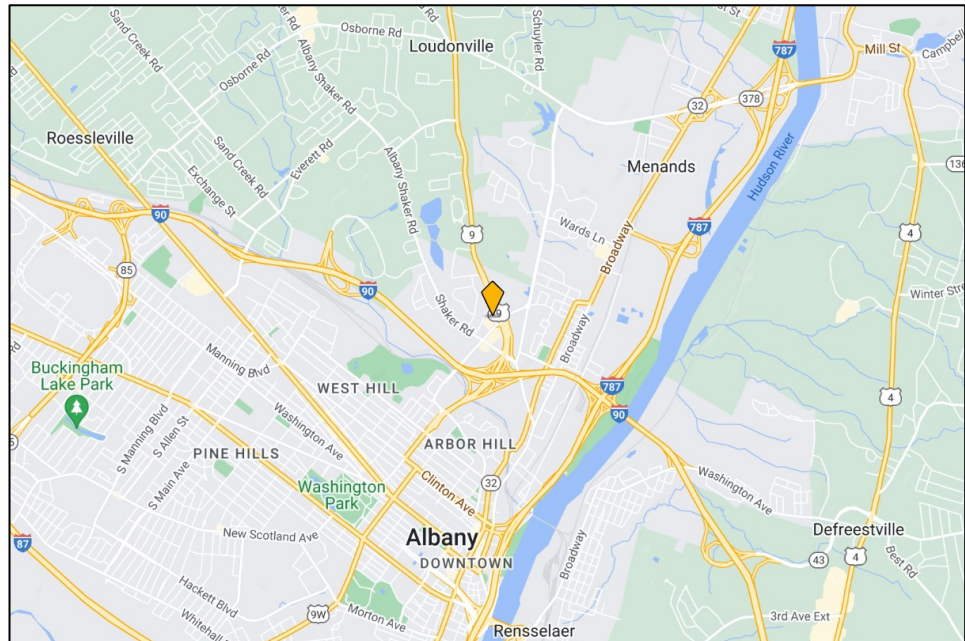
the information herein has not been verified, and is provided without warranty unless otherwise guaranteed in writing.
readers are advised to investigate and verify same prior to entering into a transaction.

**FOR
LEASE**

LOUDON PLAZA

350 NORTHERN BLVD
ALBANY, NY

LOCATION



FOR MORE
INFORMATION
PLEASE
CONTACT

RUDY R. LYNCH, CCIM

NYS Licensed Associate Real Estate Broker
(518) 337-3705 mobile
Rudy@CarrowRealEstate.com

KYLE BRADLEY, CPA

NYS Licensed Real Estate Salesperson
(845) 325-1568 mobile
kbradley@CarrowRealEstate.com



Adding Value Through Professional Real Estate Services

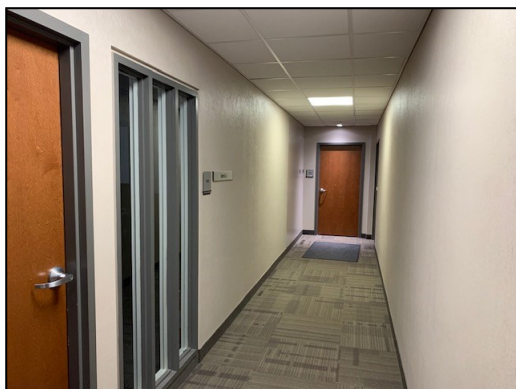
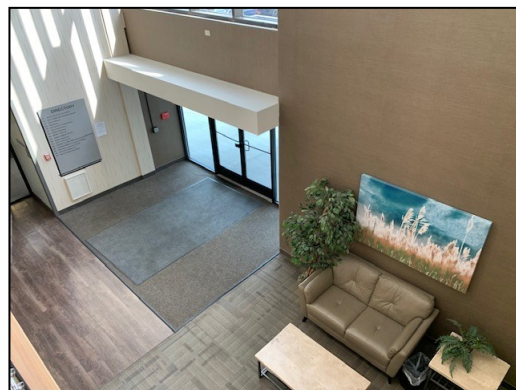
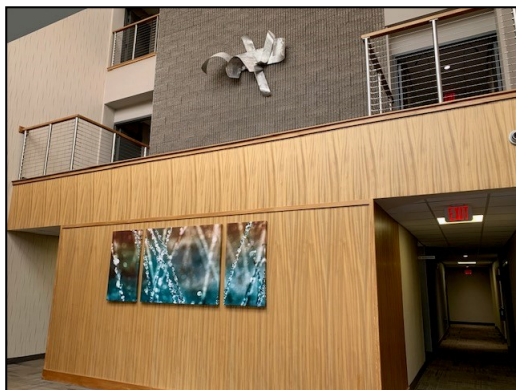
the information herein has not been verified, and is provided without warranty unless otherwise guaranteed in writing. readers are advised to investigate and verify same prior to entering into a transaction.

**FOR
LEASE**

LOUDON PLAZA

350 NORTHERN BLVD
ALBANY, NY

PHOTOS



FOR MORE
INFORMATION
PLEASE
CONTACT

RUDY R. LYNCH, CCIM

NYS Licensed Associate Real Estate Broker
(518) 337-3705 mobile
Rudy@CarrowRealEstate.com

KYLE BRADLEY, CPA

NYS Licensed Real Estate Salesperson
(845) 325-1568 mobile
kbradley@CarrowRealEstate.com



Adding Value Through Professional Real Estate Services

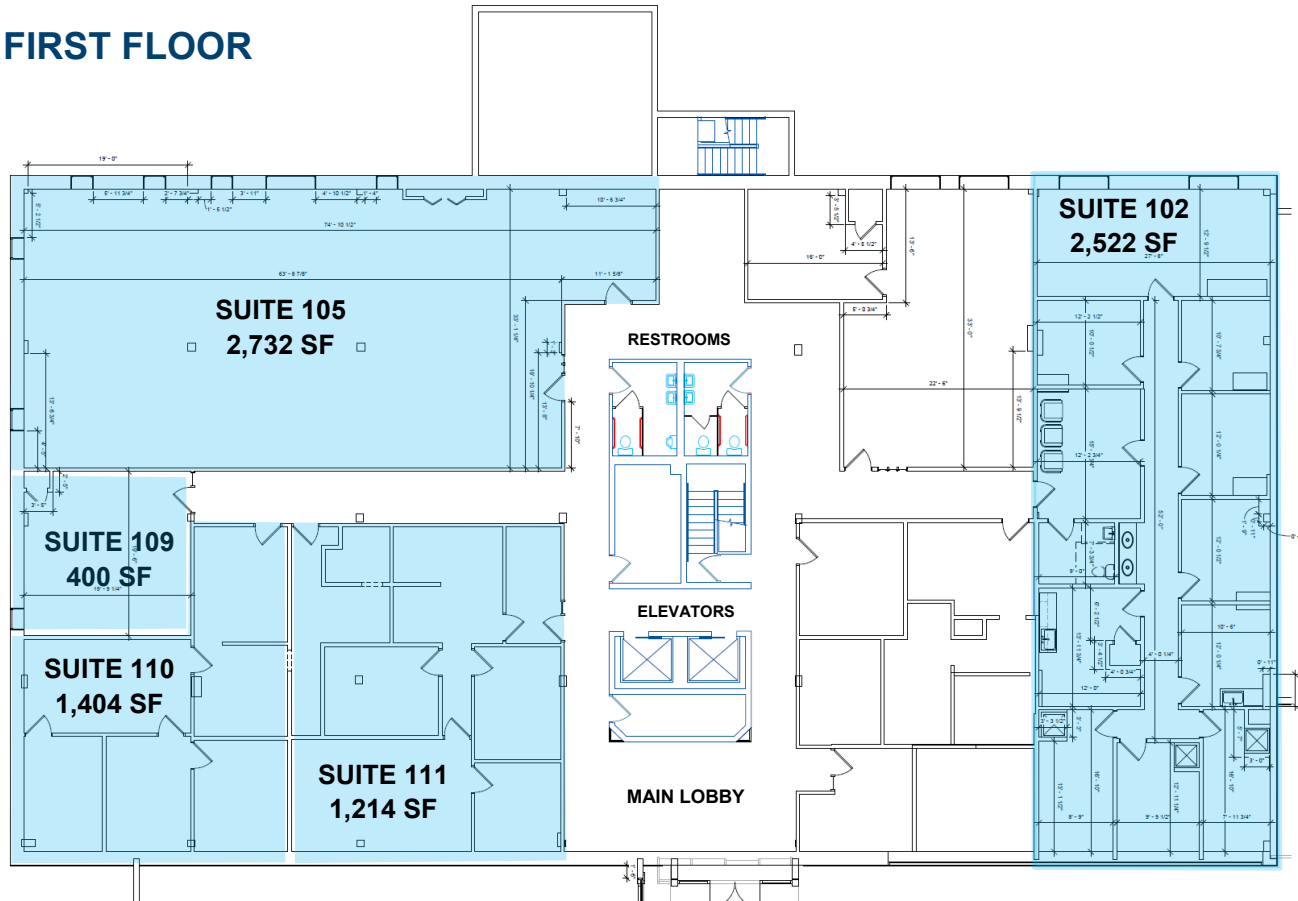
the information herein has not been verified, and is provided without warranty unless otherwise guaranteed in writing.
readers are advised to investigate and verify same prior to entering into a transaction.

**FOR
LEASE**

LOUDON PLAZA

350 NORTHERN BLVD
ALBANY, NY

FIRST FLOOR



*110 & 111 CAN BE COMBINED TO TOTAL 2,618 SF

*105, 109, 110, & 111 CAN BE COMBINED TO TOTAL 5,750 SF

FOR MORE
INFORMATION
PLEASE
CONTACT

RUDY R. LYNCH, CCIM

NYS Licensed Associate Real Estate Broker
(518) 337-3705 mobile
Rudy@CarrowRealEstate.com

KYLE BRADLEY, CPA

NYS Licensed Real Estate Salesperson
(845) 325-1568 mobile
kbradley@CarrowRealEstate.com



Adding Value Through Professional Real Estate Services

the information herein has not been verified, and is provided without warranty unless otherwise guaranteed in writing.
readers are advised to investigate and verify same prior to entering into a transaction.

350 NORTHERN BLVD
ALBANY, NY

[illegible]

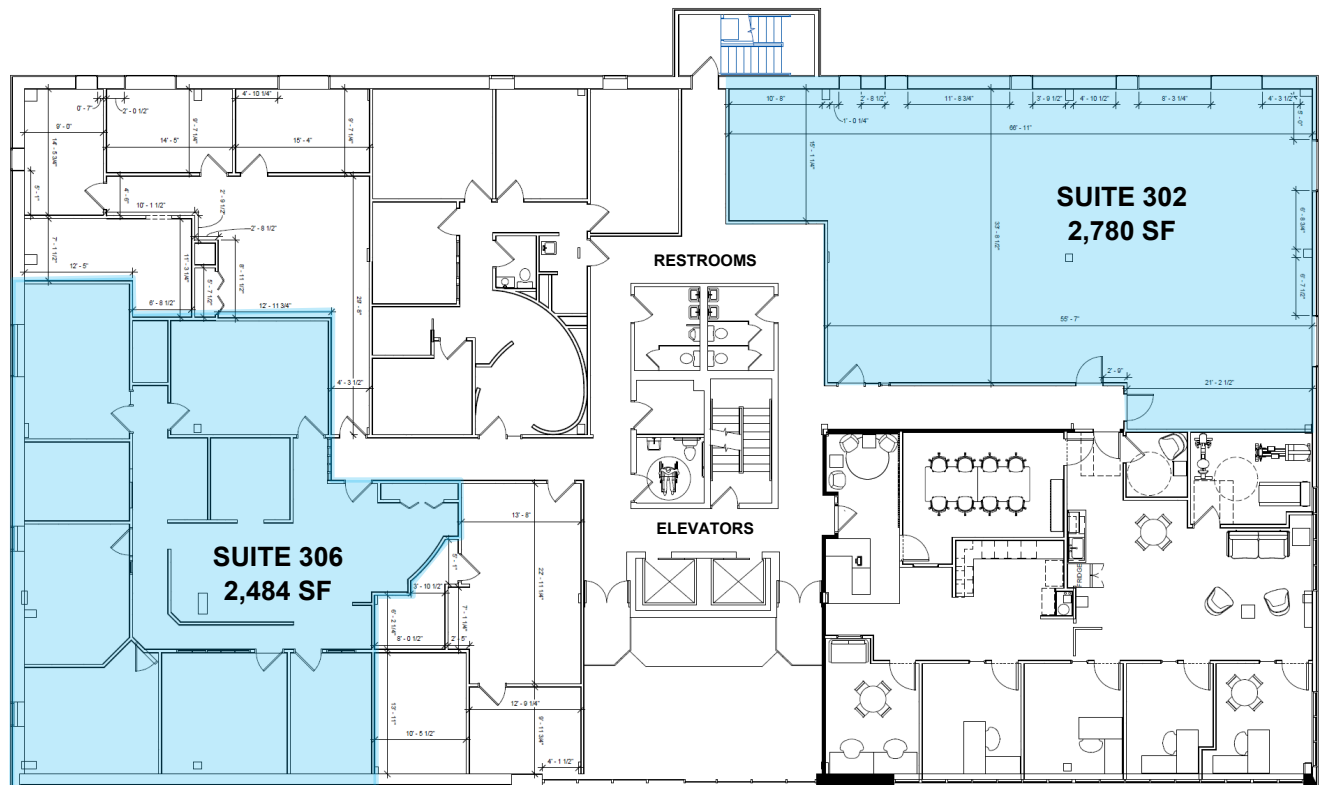
the information herein has not been verified, and is provided without warranty unless otherwise guaranteed in writing. readers are advised to investigate and verify same prior to entering into a transaction.

**FOR
LEASE**

LOUDON PLAZA

350 NORTHERN BLVD
ALBANY, NY

THIRD FLOOR



FOR MORE
INFORMATION
PLEASE
CONTACT

RUDY R. LYNCH, CCIM
NYS Licensed Associate Real Estate Broker
(518) 337-3705 mobile
Rudy@CarrowRealEstate.com

KYLE BRADLEY, CPA
NYS Licensed Real Estate Salesperson
(845) 325-1568 mobile
kbradley@CarrowRealEstate.com



Adding Value Through Professional Real Estate Services

the information herein has not been verified, and is provided without warranty unless otherwise guaranteed in writing. readers are advised to investigate and verify same prior to entering into a transaction.

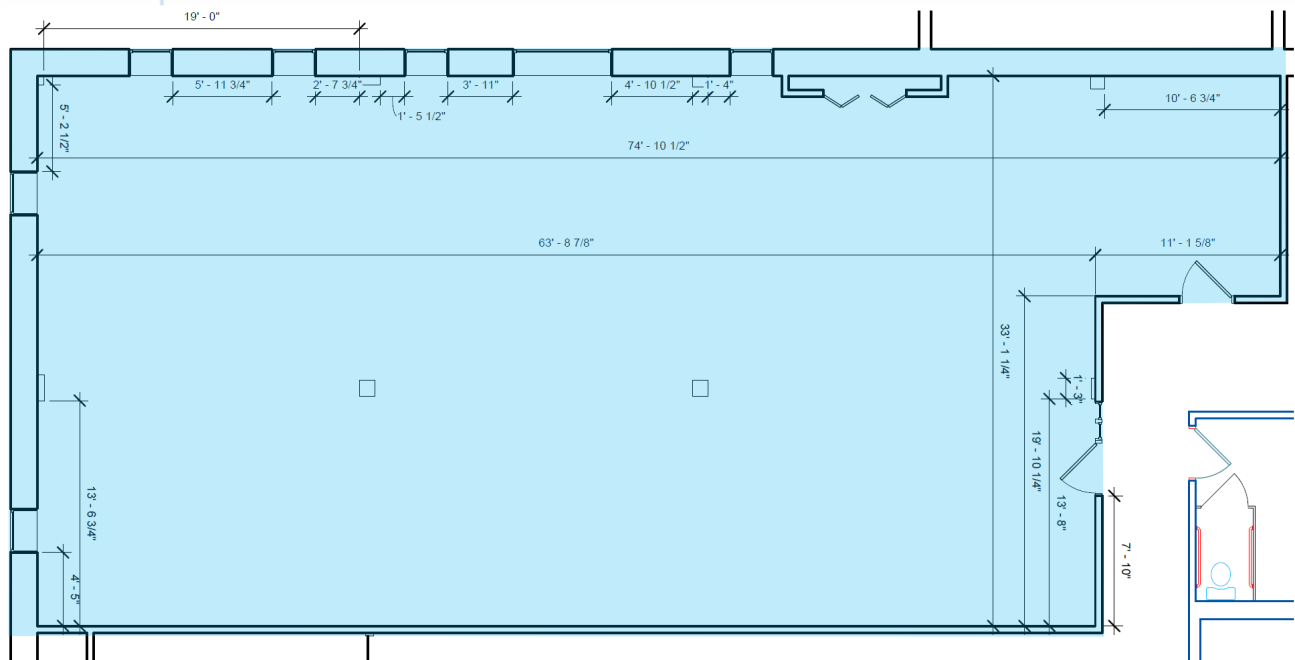
**FOR
LEASE**

LOUDON PLAZA

350 NORTHERN BLVD
ALBANY, NY

**FIRST
FLOOR**

**SUITE 105
2,732 SF**



① Level 1 - SUITE 105
3/16" = 1'-0"

**FOR MORE
INFORMATION
PLEASE
CONTACT**

RUDY R. LYNCH, CCIM

NYS Licensed Associate Real Estate Broker
(518) 337-3705 mobile
Rudy@CarrowRealEstate.com

KYLE BRADLEY, CPA

NYS Licensed Real Estate Salesperson
(845) 325-1568 mobile
kbradley@CarrowRealEstate.com



Adding Value Through Professional Real Estate Services

the information herein has not been verified, and is provided without warranty unless otherwise guaranteed in writing.
readers are advised to investigate and verify same prior to entering into a transaction.

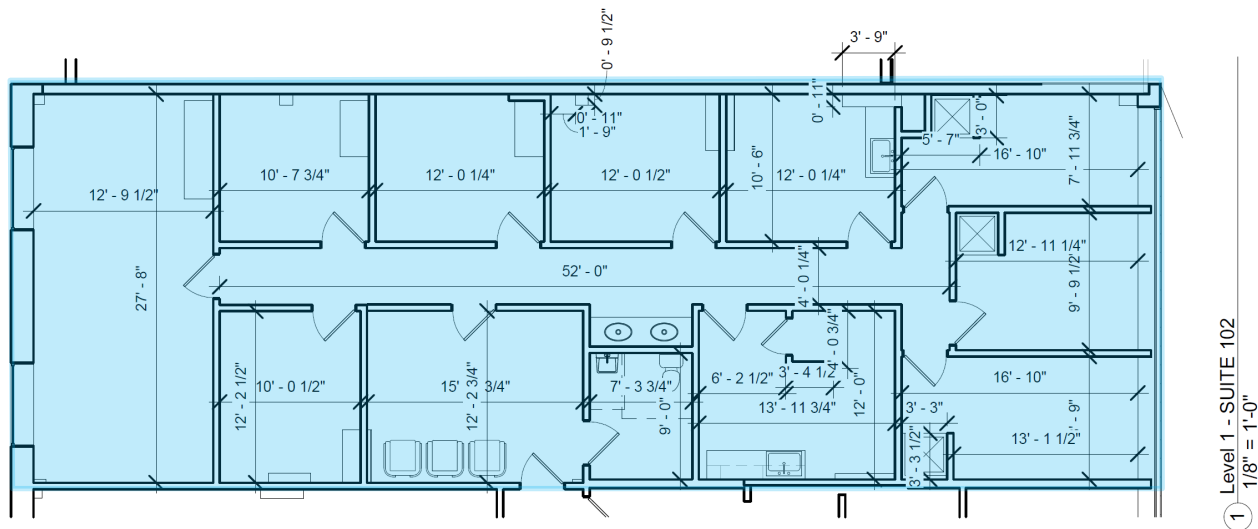
**FOR
LEASE**

LOUDON PLAZA

350 NORTHERN BLVD
ALBANY, NY

**FIRST
FLOOR**

**SUITE 102
2,522 SF**



FOR MORE
INFORMATION
PLEASE
CONTACT

RUDY R. LYNCH, CCIM

NYS Licensed Associate Real Estate Broker
(518) 337-3705 mobile
Rudy@CarrowRealEstate.com

KYLE BRADLEY, CPA

NYS Licensed Real Estate Salesperson
(845) 325-1568 mobile
kbradley@CarrowRealEstate.com



Adding Value Through Professional Real Estate Services

the information herein has not been verified, and is provided without warranty unless otherwise guaranteed in writing.
readers are advised to investigate and verify same prior to entering into a transaction.

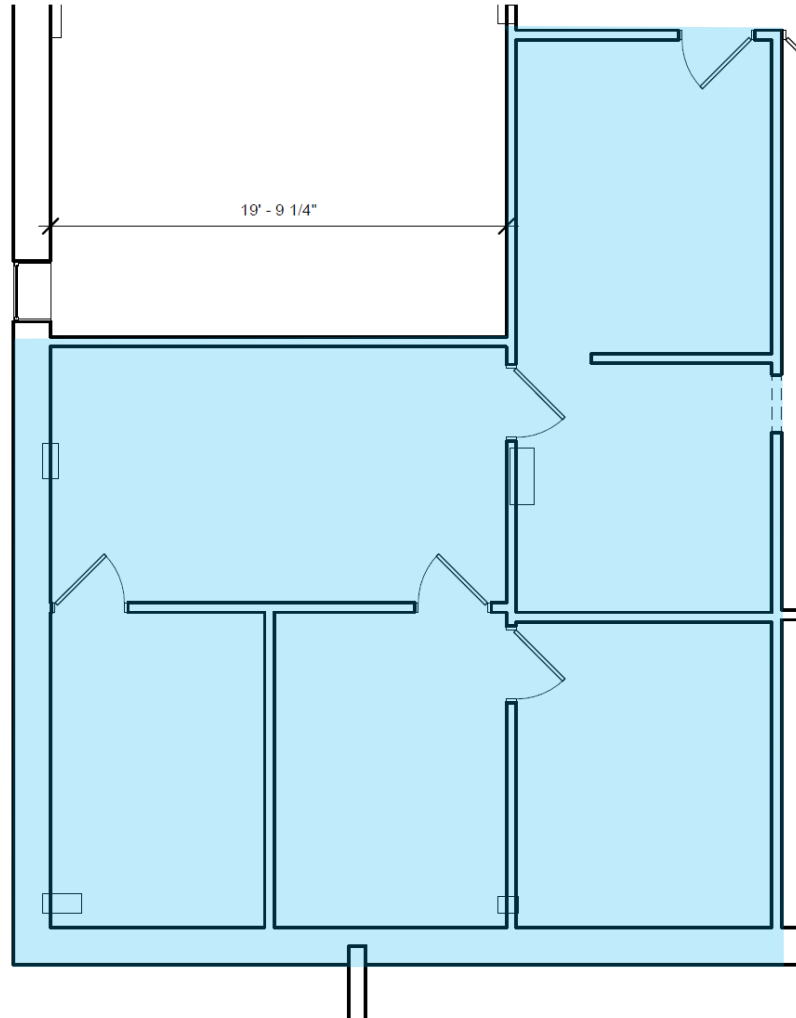
**FOR
LEASE**

LOUDON PLAZA

350 NORTHERN BLVD
ALBANY, NY

FIRST FLOOR

**SUITE 110
1,404 SF**



① Level 1 - SUITE 110
3/16" = 1'-0"

FOR MORE
INFORMATION
PLEASE
CONTACT

RUDY R. LYNCH, CCIM

NYS Licensed Associate Real Estate Broker
(518) 337-3705 mobile
Rudy@CarrowRealEstate.com

KYLE BRADLEY, CPA

NYS Licensed Real Estate Salesperson
(845) 325-1568 mobile
kbradley@CarrowRealEstate.com



Adding Value Through Professional Real Estate Services

the information herein has not been verified, and is provided without warranty unless otherwise guaranteed in writing.
readers are advised to investigate and verify same prior to entering into a transaction.

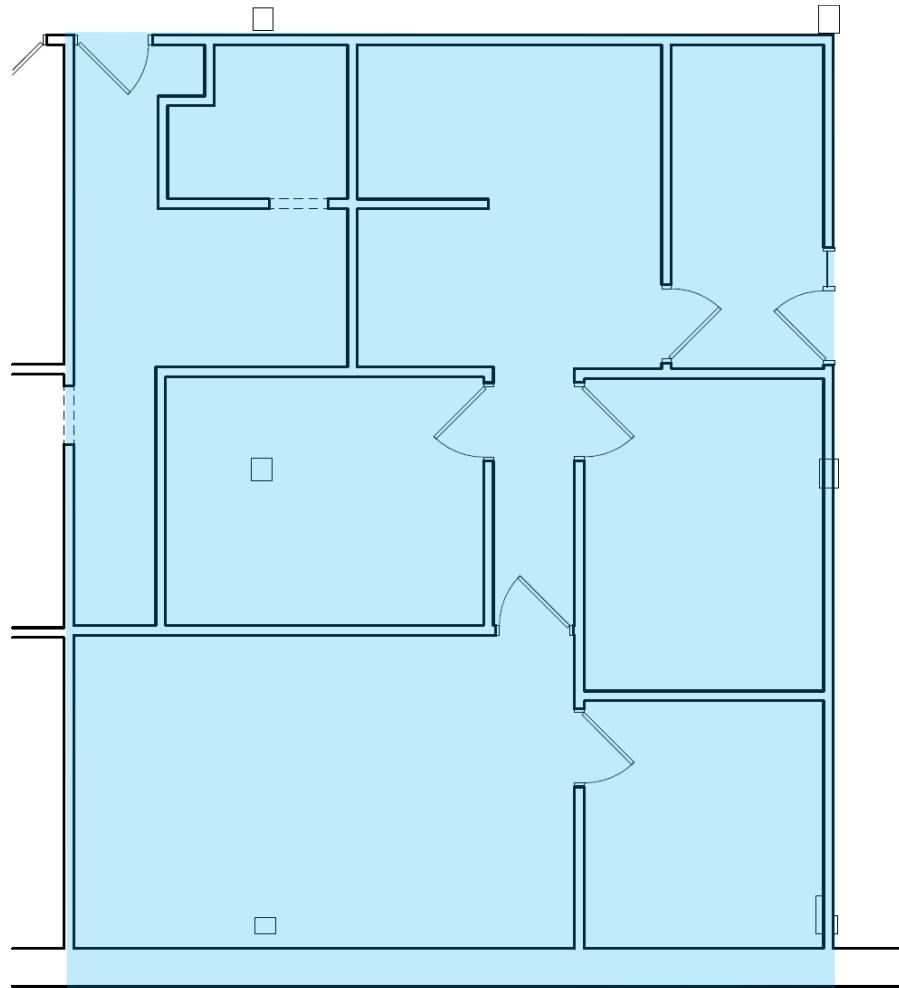
**FOR
LEASE**

LOUDON PLAZA

350 NORTHERN BLVD
ALBANY, NY

FIRST FLOOR

**SUITE 111
1,214 SF**



① Level 1 - SUITE 111
1/4" = 1'-0"

FOR MORE
INFORMATION
PLEASE
CONTACT

RUDY R. LYNCH, CCIM

NYS Licensed Associate Real Estate Broker
(518) 337-3705 mobile
Rudy@CarrowRealEstate.com

KYLE BRADLEY, CPA

NYS Licensed Real Estate Salesperson
(845) 325-1568 mobile
kbradley@CarrowRealEstate.com



Adding Value Through Professional Real Estate Services

the information herein has not been verified, and is provided without warranty unless otherwise guaranteed in writing.
readers are advised to investigate and verify same prior to entering into a transaction.

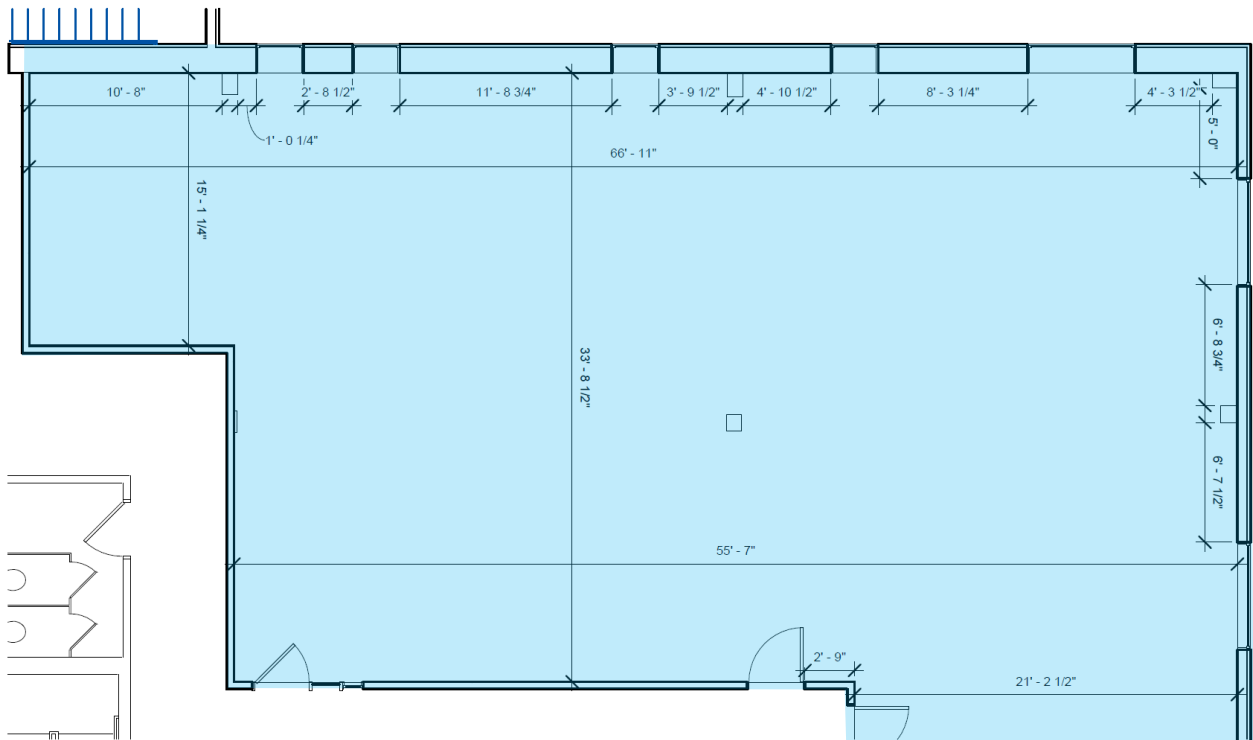
**FOR
LEASE**

LOUDON PLAZA

350 NORTHERN BLVD
ALBANY, NY

**THIRD
FLOOR**

**SUITE 302
2,780 SF**



① Level 3 - SUITE 304
3/16" = 1'-0"

**FOR MORE
INFORMATION
PLEASE
CONTACT**

RUDY R. LYNCH, CCIM

NYS Licensed Associate Real Estate Broker
(518) 337-3705 mobile
Rudy@CarrowRealEstate.com

KYLE BRADLEY, CPA

NYS Licensed Real Estate Salesperson
(845) 325-1568 mobile
kbradley@CarrowRealEstate.com



Adding Value Through Professional Real Estate Services

the information herein has not been verified, and is provided without warranty unless otherwise guaranteed in writing.
readers are advised to investigate and verify same prior to entering into a transaction.

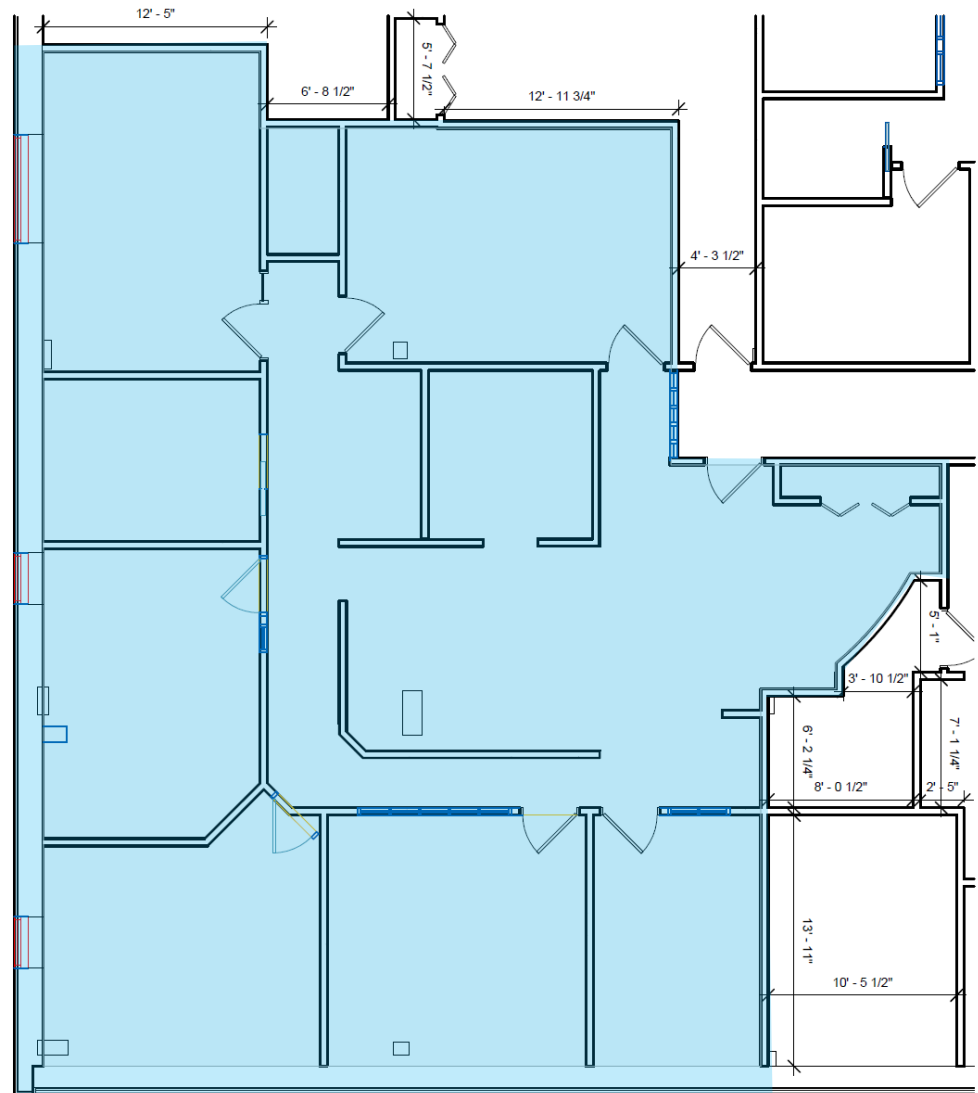
**FOR
LEASE**

LOUDON PLAZA

350 NORTHERN BLVD
ALBANY, NY

**THIRD
FLOOR**

**SUITE 306
2,484 SF**



① Level 3 - SUITE 306
3/16" = 1'-0"

FOR MORE
INFORMATION
PLEASE
CONTACT

RUDY R. LYNCH, CCIM

NYS Licensed Associate Real Estate Broker
(518) 337-3705 mobile
Rudy@CarrowRealEstate.com

KYLE BRADLEY, CPA

NYS Licensed Real Estate Salesperson
(845) 325-1568 mobile
kbradley@CarrowRealEstate.com



Adding Value Through Professional Real Estate Services

the information herein has not been verified, and is provided without warranty unless otherwise guaranteed in writing.
readers are advised to investigate and verify same prior to entering into a transaction.