

TREMENDOUS EXPOSURE!!!

DON'T LET THIS ONE SLIP AWAY!

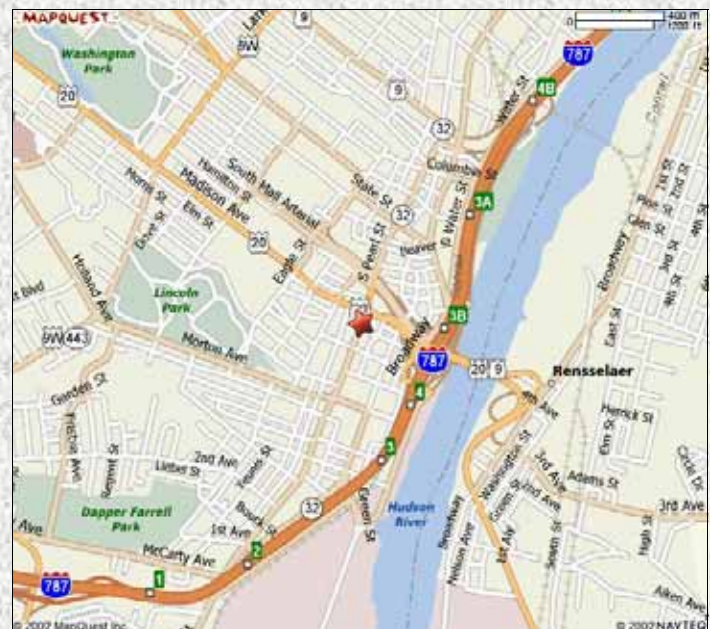


**135-137-139 SOUTH PEARL STREET
ALBANY, NEW YORK**

- TWO ADJACENT LOTS INCLUDED
- Easy Access to I-90 & I-87
- GREAT LOCATION!
- Only Steps Away From State Government Offices and All Other Downtown Amenities.
- Incredible Corner Exposure
- 5,456 Total Square Feet
- Ready for residential/retail conversion
- Located in up and coming area near proposed Convention Center.
- WALK-IN BANK VAULT INCLUDED

**PRICE REDUCED!!!
AVAILABLE FOR ONLY
\$170,000**

Directions: Intersection of Madison Avenue and South Pearl Street.



Carrow Real Estate Services, LLC
99 Washington Avenue
Albany, NY 12260
Phone: 518/462.7491 Fax: 518/455.8903

RUDY LYNCH
ASSOCIATE BROKER
Rudy@CarrowRealEstateServices.com
518/462.7491